



THE NEW ENGLAND  
**RAKE**  
C O M P A N Y



## **DURABLE & DEPENDABLE HAND TOOLS.**

The New England Rake Company is family owned and operated. We seek to produce the highest quality hand tools for our customers. Our rakes reflect durability and effective design that will enhance your workmanship. These lightweight rakes will endure when used, stored and maintained properly.

# QUALITY IS OUR PRIORITY.

✓ Durable

✓ Dependable

✓ Made in U.S.A.

Whether you are raking out a newly installed lawn, preparing an infield, leveling a playing surface or spreading aggregate, our aluminum rakes can help you achieve excellent results. Ask about our Double Brace Kit for Wide Rakes and our optional 84" Long Handle. Also not shown here are Pro-Screed Models from 24"-48" Wide.

The New England Rake Company engineers and fabricates all product lines in our manufacturing facility located in West Haven, Connecticut.



## New England Classic

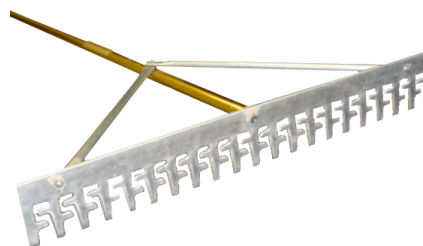
Tapered tines enhance maneuverability

Lightweight design

Gold powder coated handle

Available sizes: 24", 30", 36", 42", 48"

The New England Classic is a straight tooth aluminum rake.



## New England Sifter

Enhanced 'S' patterned tooth technology

Anti-corrosive parts

Gold powder coated handle

Available sizes: 24", 30", 36", 42", 48"

Excellent for infield grading

The New England Sifter is a uniquely designed grading rake for infield maintenance.



## New England Asphalt Rake

Lightweight design

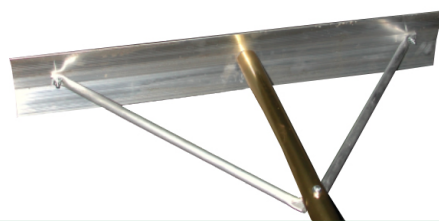
Perfect for scarifying and leveling

Useful for light asphalt paving applications

Available sizes: 30", 36", 42" (24" & 48" limited)

Excellent for Bocci and Clay Tennis Courts

The New England Asphalt Rake dual-head design provides stamped teeth on one side and a smooth lute blade on the other side of this aluminum tool.



## New England Concrete Lute

Anti-corrosive parts

Smooth edge for versatile use

Gold powder coated handle

Available sizes: 24", 30", 36", 42", 48"

The New England Concrete Lute offers a two-sided smooth blade for a variety of applications such as concrete, asphalt, etc.

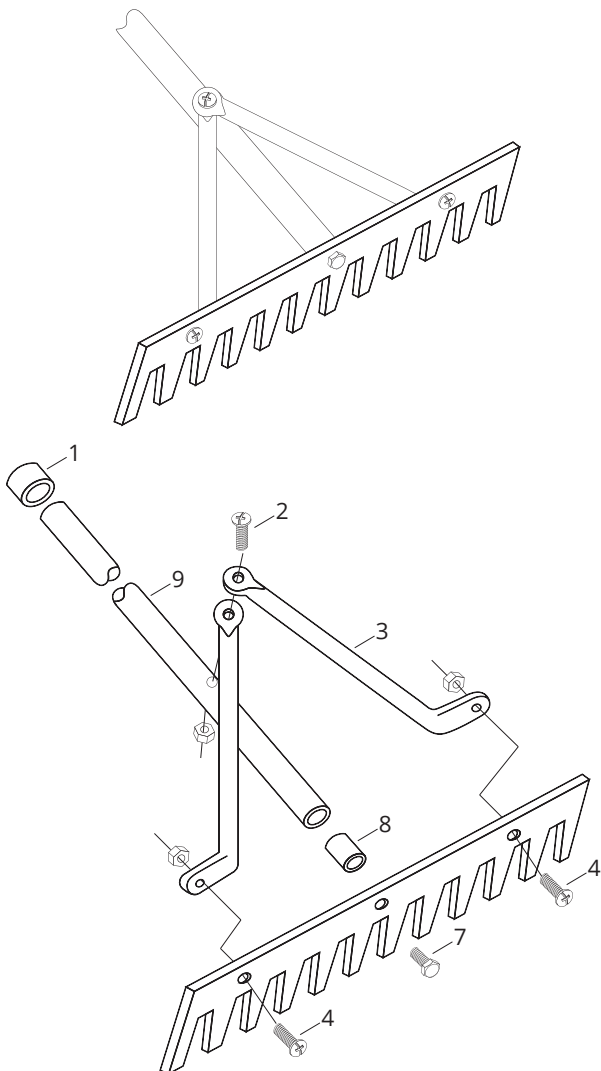
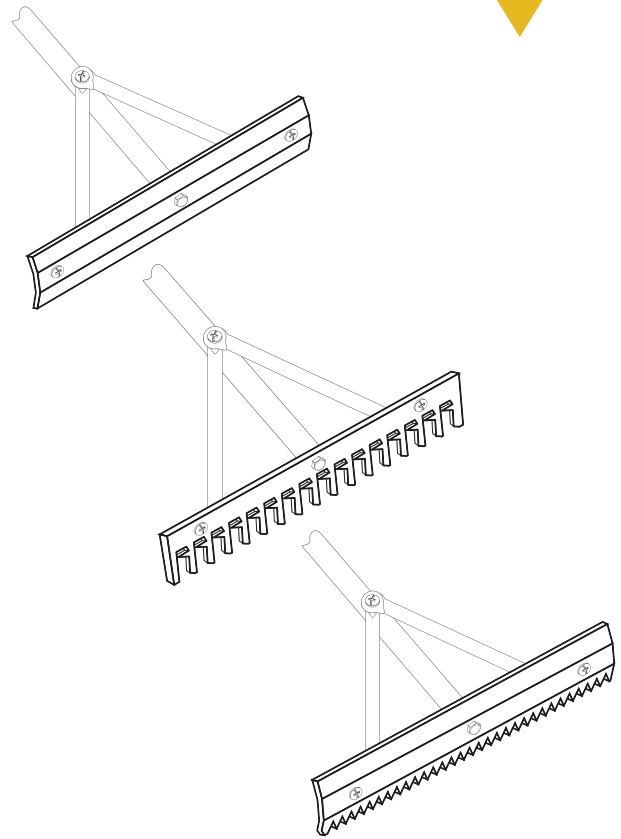


# ASSEMBLY INSTRUCTIONS

## Packaging Contents

Item 1	Handle Grip (1)
Item 2	1 3/4" Screw & Nut (2)
Item 3	Brace (2)
Item 4	3/4" Screw & Nut (2)
Item 5/6	Rake or Lute Head (1) <i>not numbered</i>
Item 7	Machine Bolt 1/4"-20 x 1 1/2"
Item 8	Center Plug (1)
Item 9	Handle

Please note: Head width may vary slightly from stated size due to tooth spacing



## Tools Required: 7/16" & 3/8" Wrench or Deep Socket, No. 2 Phillips Screwdriver

1. Remove Braces (Item 3) and place into position as shown in the diagram above.
2. Insert handle fasteners (Item 2) through the flat surfaces of the braces into the handle assembly (Item 9). Secure with lock nut and hand tighten.
3. Next, place center bolt (Item 7) through rake head or lute blade (Item 5 or 6) into the center plug (Item 8). Be sure that secondary rake head holes line up (Item 4).
4. Insert center plug (Item 8) into rake handle and assemble rake head to center plug.
5. Insert secondary rake screw (Item 4) through rake head or lute blade and hand tighten.
6. Tighten all nuts with applicable wrench size. Apply pressure to handle and rake head to help prevent center plug from spinning while thread locker penetrates threads.
7. Place end cap (Item 1) on the end of the handle.

**\*\*Caution - place rake in secure position with rake teeth pressed against a flat surface to prevent the rake from moving unexpectedly. Store rakes properly, with tines face down, in order to prevent tripping or possible injury.**



THE NEW ENGLAND RAKE COMPANY

## *CONTACT US*

### **ADDRESS**

50 Industry Drive  
West Haven, CT 06516

### **PHONE**

(203) 933-1230

### **FAX**

(203) 931-1318

### **EMAIL**

[sales@newenglandrake.com](mailto:sales@newenglandrake.com)

VISIT OUR ONLINE STORE:

[www.newenglandrake.com](http://www.newenglandrake.com)